



**SKY KNIGHTS
RC Flying Club
MEMBER HANDBOOK**

May 2011 Edition

Table of Contents

| | |
|-------------------------------------------|----|
| Welcome to the Sky Knights | 3 |
| History of the Portland Sky Knights | 3 |
| Membership Requirements | 4 |
| Club Meetings | 4 |
| Club Dues | 4 |
| Flying Safety | 5 |
| Orient Field Boundaries/Map | 6 |
| AMA Safety Code | 7 |
| By-Laws | 10 |
| Membership Responsibility Acknowledgement | 13 |

Welcome to the Sky Knights

Remember that the Club was formed to bring together people who like to build and/or fly radio controlled model aircraft. The purpose is to have fun! If there is a problem or you have a question, call one of the club officers listed in our club newsletter FLIGHTLINE.

New members will be required to attend a short orientation on Field Use and sign a form agreeing to comply with the field rules. Orientation will be conducted by club trainers.

New members will also be required to pass the Solo Certification Test as found in the Training and Instruction Manual. This test will be administered by one of the club's trainers. Passing this test is a prerequisite to full club membership.

Prior to passing the Solo Certification Test, new members will be issued a **TEMPORARY** Club card. Until the new member passes the Solo Certification Test, he or she **MUST** be accompanied by a Sky Knight member that has a **PERMANENT** Club card when using the flying field.

History of the Sky Knights

In 1962 Earl Farasy from Milwaukie, Oregon started a small hobby shop in his garage. A few of the old timers used to go there for supplies. A short time later a decision was made to form a club.

In 1964 a member, Fred Gilchrist, asked an attorney friend of his to file papers of incorporation. President Guy Forman signed the legal papers and the Portland Sky Knights became official.

Dave Anderson suggested the name Sky Knights after the name of a Cessna aircraft.

Members flew their planes at different locations. Delta Park and Clackamas High School were the most popular sites. With the passage of time flying locations became more restrictive and eventually it was necessary to lease a site away from the main metropolitan area. Currently the Sky Knights flying site is located on Orient Drive east of Gresham.

Sky Knights currently sponsor the NW Seaplane Championship at Pine Hollow Reservoir and the Evergreen Scale Qualifier for scale model competition.

The Sky Knights RC Flying Club is one of the largest and oldest flying clubs in the area.

Present members of the Sky Knights who have been in the club since it was formed are Dick Hansen and Bob Raser.

MEMBERSHIP REQUIREMENTS

Any responsible individual showing an interest in building and / or flying radio control model aircraft and/or helicopters may be eligible for membership.

Individuals interested in becoming a member may obtain a membership application from a club officer or at any regularly scheduled club meeting.

Applicants are expected to have a club member sponsor. The sponsor's duties are to be there for the new member and to help the new member become productive and involved in the Sky Knights.

All members shall maintain a current membership in the Academy of Model Aeronautics.

All members will comply with the Sky Knights R/C Club Bylaws.

Only members whose dues are current may participate in club activities or be extended voting privileges.

New members will be issued a membership card upon payment of dues as well as a nametag and a copy of the club's Bylaws.

CLUB MEETINGS

Members are expected to attend the monthly meetings held the second Monday of each month. Date and times are announced at each meeting.

A typical meeting consists of a reading of the minutes from the last meeting, officer reports, old business, new business, and such other business that may come from the floor. Following the meeting there is usually a "Show and Tell" where members bring new projects and tell about them.

The club executive board meets the first Monday of each month to prepare for the general meeting. The executive board consists of the president, vice president, secretary, and treasurer. All members are welcome to attend these meetings. Exec board meetings are held at a member's home. The host for each exec board meeting is announced at the preceding general meeting.

The backbone of the club is its members. The club needs volunteers to maintain our flying fields, work on club events, run for office, and serve on a committee. Don't wait to be asked: Offer to help.

The Club's website is www.sky-knights.org. Use it to receive the latest Club news.

Club Dues

The current dues (2011) are \$90 for individual membership (other membership options are outlined in the Club Bylaws) annually and are due at the April club meeting. After April 30th, dues will include a \$10 late fee. If dues are not paid by July 1, that person's membership will be terminated and he or she will be dropped from the membership roster. For new members, second year dues will be prorated based on the month in which the new member joined.

Dues are established by a vote of the general membership. Dues are not refundable. Dues in arrears (maximum of one year) are payable when membership is reinstated to active status.

**SKY KNIGHTS R/C FLYING SITE
OPERATIONAL RULES**

1. All pilots must abide by AMA rules and regulations and must be a member in good standing of THE SKY KNIGHTS R/C CLUB and AMA.
2. The pilot's club membership card must be placed on the frequency board before his/her transmitter is turned on.
3. All engines must be effectively muffled. Sound level shall not to exceed 92db at 15 feet at full throttle.
4. Pilots will remain at the designated pilot stations when flying their aircraft. Pilots may stand on the runway during takeoff after announcing their intentions to the other pilots.
5. Airborne aircraft will remain within the designated flight area on the map that is posted at the radio frequency board.

OVERFLIGHT OF THE FOLLOWING AREAS IS STRICTLY FORBIDDEN AT ANY TIME:

- THE PITS,
- PARKING AREA,
- WEST NO-FLY ZONE OVER OR BEYOND ORIENT DRIVE,
- EAST NO-FLY ZONE BEYOND THE EAST BORDER OF THE BERRY FIELD,
- NEIGHBORHOOD HOMES or,
- SOUTH OF THE RUNWAY

6. Do not fly over nursery or other workers when they are in the flight area.
7. All members will remove their own trash and take it with them when they leave the field area. Do not litter anywhere in the area.
8. Park only in designated parking areas. When arriving or departing the field, use the utmost caution! Stop, look and listen before entering Orient Drive from the field.
9. The entrance gate is to be locked by the last person at the field. Under no circumstances is the gate to be left open.
10. Operation of internal combustion engines is allowed only during times as follows:

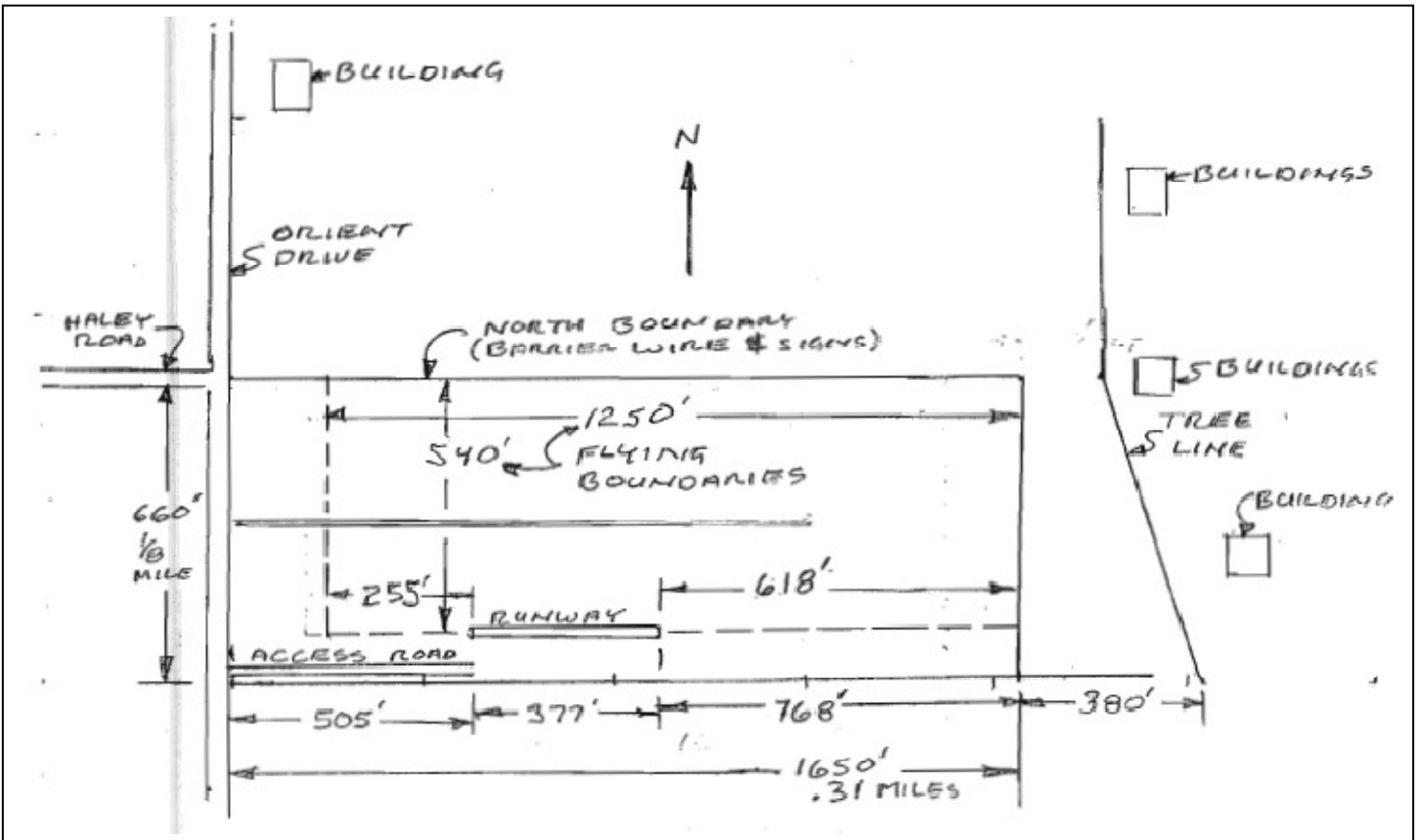
10:00 AM until dusk on everyday;

GUIDELINES:

- A. Abide by the AMA safety code at all times.
- B. When utilizing worktables face the flight line.
- C. Fly with existing flight patterns.
- D. Announce your intentions to the other pilots.
- E. Announce high speed passes directly over the runway.
- F. Landing aircraft and announced emergencies have priority.

G. Yield flying space to novice fliers if possible

Sky Knights Orient Flying Field Flight Boundaries



AMA Safety Code
Academy of Model Aeronautics National Model
Aircraft Safety Code
Effective January 1, 2010

GENERAL

A model aircraft shall be defined as a non-human carrying aircraft capable of sustained flight in the atmosphere. It may not exceed limitations established in this code and is intended to be used exclusively for sport, recreation, and/or competition.

1. I will not willfully fly my model aircraft in a careless or reckless manner, and will abide by this Safety Code and any additional rules specific to flying sites.

2. I will yield the right-of-way to man-carrying aircraft and will see and avoid all aircraft, utilizing a spotter when appropriate. (See AMA Document #540-D on See and Avoid Guidance.)

3. I will not fly my model aircraft higher than approximately 400 feet above ground level, when within three (3) miles of an airport without notifying the airport operator.

4. The maximum takeoff weight of a model aircraft, including fuel, is 55 pounds, except for those flown under the AMA Experimental Aircraft Rules.

5. I will not fly my model aircraft in sanctioned events, air shows, or model demonstrations unless I have previously proven that my aircraft, control system, and piloting skills are adequate by successfully executing all maneuvers intended or anticipated in the specific event. If I am not a proficient pilot, I will not fly in these events unless assisted by an experienced pilot.

6. I will not fly my model aircraft unless it is identified with my name and address, or AMA number, inside or affixed to the outside of the model aircraft. This does not apply to model aircraft flown indoors.

7. I will not operate model aircraft with metal-blade propellers.

8. I will not operate model aircraft carrying pyrotechnic devices which explode or burn, or any device, which propels a projectile of any kind. Exceptions include Free Flight fuses or devices that burn producing smoke and are securely attached to the model aircraft during flight. Rocket motors up to a G series size may be used, provided they remain firmly attached to the model aircraft during flight. Model rockets may be flown in accordance with the National Model Rocketry Safety Code; however, they may not be launched from model aircraft. Officially designated AMA Air Show Teams (AST) are authorized to use devices and practices as defined within the Team AMA Program Document.

9. I will not operate my model aircraft while under the influence of alcohol or while using any drug which could adversely affect my ability to safely control the model.

10. When and where required by rule, helmets must be properly worn and fastened. They must be OSHA, DOT, ANSI, SNELL or NOCSAE approved or comply with comparable standards.

RADIO CONTROL

1. All pilots shall avoid flying models over unprotected people.

2. I will complete a successful radio equipment ground-range check in accordance with the manufacturer's recommendations before the first flight of a new or repaired aircraft.

3. At all flying sites a safety line or lines must be established, in front of which all flying takes place. Only personnel associated with flying the model aircraft are allowed at or in front of the safety line. In the case of air shows or demonstrations a straight safety line must be established. An area away from the safety line must be maintained for spectators. Intentional flying behind the safety line is prohibited.

(See AMA Document #706 for Recommended Field Layout.)

4. I will operate my model aircraft using only radio control frequencies currently allowed by the Federal Communications Commission (FCC). Only individuals properly licensed by the FCC are authorized to operate equipment on Amateur Band frequencies.

5. I will not knowingly operate my model aircraft within three (3) miles of any preexisting flying site without a frequency-management agreement. (See AMA Document #922 for Testing for RF Interference. See AMA Document #923 for Frequency Management Agreement.)

6. With the exception of events flown under official AMA Competition Regulations rules, excluding takeoff and landing, no powered model may be flown outdoors closer than 25 feet to any individual, except for the pilot and the pilot's helper(s) located at the flight line.

7. Under no circumstances may a pilot or other person touch a model aircraft in flight while it is still under power, except to divert it from striking an individual. This does not apply to model aircraft flown indoors.

8. Radio-controlled night flying requires a lighting system that provides the pilot with a clear view of the model's attitude and orientation at all times.

9. The operator of a radio-controlled model aircraft shall control it during the entire flight, maintaining visual contact without enhancement other than by corrective lenses that are prescribed for the pilot. First-Person View (FPV) flying may only be conducted in accordance with the procedures outlined in AMA Document #550

FREE FLIGHT

1. I will not launch my model aircraft unless I am at least 100 feet downwind of spectators and automobile parking.

2. I will not fly my model aircraft unless the launch area is clear of all individuals except my mechanic, officials, and other fliers.

3. I will use an effective device to extinguish any fuse on the model aircraft after the fuse has completed its function.

CONTROL LINE

1. I will subject my complete control system (including the safety thong where applicable) to an inspection and pull test prior to flying. The pull test will be in accordance with the current Competition Regulations for the applicable model aircraft category. Model aircraft not fitting a specific category shall use those pull-test requirements as indicated for Control Line Precision Aerobatics.

2. I will ensure that my flying area is clear of all utility wires-nr poles and I will not fly a model aircraft closer than 50 feet to any above-ground electric utility lines.

3. I will ensure that my flying area is clear of all nonessential participants and spectators before permitting my engine to be started.

Specialized AMA Documents:

- Radio Control Combat (#525)
- General Radio Control Racing (#530)
- Giant Scale Radio Control Racing (#515-A)
- Gas Turbine Operation (note: Special Waiver Required) (#510-A)
- Park Flyer Safe Operating Recommendations (#545)
- First Person View (FPV) Operations (#550)
- Recommended Field Layout (#706)
- Procedure for RF Interference Testing between Model Sites (#922)
- Frequency Management Agreements (#923)
- See and Avoid Guidance (#540-D)
- Team AMA Air Show Safety Document (#718)

These special codes and appropriate documents may be obtained either from the AMA Web site at www.modelaircraft.org or by contacting AMA Headquarters.

Member Insurance Benefits:

AMA coverage is not limited to model flying at contests or at a club field. It applies to flying on private property, at public demonstrations and air shows. For a summary of insurance benefits provided with your AMA membership, please visit www.modelaircraft.org/files/500-a.pdf. Complete details of coverage(s) and exceptions are contained in master policies available at www.modelaircraft.org/documents.aspx, documents #500-L, 500-LA, 500-M and 500-N.

All incidents need to be reported to AMA immediately! During regular business hours (Monday-Friday, 8 am-5 pm EST) please call (765) 287-1256. To report an incident involving serious injuries after hours, please call (765) 281 -2876.

The Federal Aviation Administration (FAA) regulation of model flying:

Our privilege to fly model aircraft in the National Airspace (NAS) depends on our commitment to remain "well clear" of manned aircraft. Simply avoiding an actual collision is not enough. A "near miss" is not acceptable. Unless flying at a mixed-use site where manned and model aircraft routinely share airspace through their own site-specific rules, models must fly sufficiently far away from manned aircraft so as not to create a collision hazard.

Please familiarize yourself with the "See And Avoid" guidance document located at www.modelaircraft.org/files/540-d.pdf.

Publication Services:

If a magazine is included with your membership, your subscription begins with the first issue available for the year after a correct current application and payment are received. You will receive your first issue six to eight weeks after membership payment has been made.

By-Laws

ARTICLE I - NAME

- 1.1 The organization name shall be the 'Sky Knights Radio Control Club of Portland, Oregon, Inc.'.

ARTICLE II - PURPOSE

- 2.1 The primary objective of this club shall be to assist each member in achieving that which he seeks from-radio control aeromodeling.
- 2.2 The club shall establish basic rules of conduct and shall define club activities.
- 2.3 The club shall be non-profit.
- 2.4 -The club shall maintain continuing effort to provide flying sites for members.

ARTICLE III - MEMBERSHIP

- 3.1 Any responsible individual showing an interest in building and/or flying radio controlled model aircraft shall be eligible for membership. .
- 3.2 All members shall maintain a current membership in the Academy of Model Aeronautics.
- 3.3 All members shall have read and shall comply with these Bylaws.
- 3.4 No member shall participate in club activities nor be extended voting privileges until the' full amount of his dues has been paid as specified under ARTICLE IV- DUES.
- 3.5 By a majority vote the membership with a quorum present and voting at a regular business meeting the Club may place a limit on total Club membership.

ARTICLES IV - DUES

- 4.1 Club dues shall be paid at a rate established by the general membership. The rate as approved by the general membership may include late payment fees or dues increases.
- 4.2 New members shall pay an initiation fee; which shall be established by the general membership.
- 4.3 Dues shall not be refundable.
- 4.4 Junior members (18 and under) shall pay such dues as approved by the general membership.
- 4.5 All new members, upon payment of dues, shall be entered on the membership roster and shall be presented with a membership card, name tag, and a copy of these Bylaws.
- 4.6 Members in arrears shall be assessed penalties and be suspended from the club roster and club activities in accordance with a plan approved by the general membership.
- 4.7 Reinstatement of prior members to active status shall be in accordance with a plan approved by the general membership.

ARTICLE V - MEETINGS

- 5.1 Regular business meetings shall be held on the second Monday of each month, unless otherwise scheduled by the membership.
- 5.2 Regular meetings are open to all members and their guests.
- 5.3 Additional meetings may be called by the President, or any five members of the Executive Committee, upon due notification of the membership.
- 5.4 The order of business at Regular Meetings shall be:
 1. Call meeting to order.
 2. Introduce guests.
 3. Introduce prospective members.
 4. Reading of the minutes of previous meetings, with approval.
 5. Reading of correspondence.
 6. Treasurer's report and approval.
 7. Special reports.
 8. Unfinished business.
 9. New business.
 10. Adjournment.
 11. Entertainment or Special Activities.
- 5.5 Roberts Rules of Order shall govern all questions of procedures not otherwise covered in these bylaws.

ARTICLE VI - ELECTIONS

- 6.1 Candidates for election shall have been members for one year at time of election.
- 6.2 Club officers shall be: President, Vice-President, Treasure, and Secretary.
- 6.3 No member shall hold more than one office at any one time.
- 6.4 Officers shall be elected for a term of one year, commencing with the first regular meeting in January.
- 6.5 Nominations shall be made at the October and November meetings, with the election to be held at the November meeting at the close of nominations.
- 6.6 Vacancies may be filled by appointment by the President, subject to approval by the membership. Presidential vacancies may be filled by election only.
- 6.7 Any officer may be recalled by a vote of the majority of the whole membership. The membership shall be notified, in writing, of the time and place of any recall vote.

ARTICLE VII - DUTIES OF CLUB OFFICERS

- 7.1 The PRESIDENT shall preside at all meetings, preserve order, and enforce the Bylaws. The PRESIDENT will designate the Club News Letter Editor, the Video Librarian and the Club Safety Officer; and may appoint Committees.
- 7.2 The VICE-PRESIDENT will preside at all meetings, preserve order, and enforce the Bylaws in the absence of the President.

7.3 The TREASURER shall receive all monies due the club, and regularly deposit said monies, except petty cash, in the club checking account. Petty cash shall be kept less than \$25.00. He shall keep an accurate and current record of all financial dealing of the club, and shall present an itemized report at each Regular Meeting which, when accepted, shall be included in the minutes.

7.4 The SECRETARY shall record the proceedings of all meetings in a special book for the purpose. He shall conduct the correspondence of the club, and shall retain a copy of all correspondence received by his office.

ARTICLE VIII - AMENDMENTS TO THE BYLAWS

8.1 Any member may recommend, and vote on a amendment to the Bylaws.

8.2 Amendments must be submitted to the Secretary in writing and shall be read and discussed at a Regular meeting. A vote shall be taken at the next Regular Meeting.

8.3 Adoption of amendments, changes in Club dues and setting limitations on Club membership shall require a 2/3 majority vote in favor by the members present and voting with a quorum present. A quorum shall be one third (1/3) of the Club membership at the time of the vote.

ARTICLE IX - PERMANENT CLUB ACTIVITIES

9.1 The Club shall annually sponsor the North West Seaplane Championships held at a time and place as approved by the membership.

ARTICLE X - RULES OF CONDUCT

10.1 Members shall comply with the AMA Safety Code and Rules of Conduct.

10.2 All members shall conduct themselves in a courteous and sportsman like manner at all time. Any member not conforming to the rules of conduct will be called before the Grievance Committee for possible disciplinary action.

1 The Grievance Committee shall consist of Club Officers plus three non-officer members appointed by the President.

2 The Grievance Committee shall investigate reports of violations of conduct by members.

3 If the Grievance Committee determines that a member violated the rules of conduct they shall advise the offending member of their findings and that continued inappropriate or improper conduct will not be tolerated in the future.

4 If additional complaints of improper or inappropriate conduct are substantiated against a member then the Grievance Committee may recommend to the General Membership disciplinary action or sanctions up to and including the loss of membership privileges.

5 If a majority of the General Membership voting at a regular meeting indorse the recommendations of the Grievance Committee the sanctions, disciplinary action or dismissal from the Club will become effective immediately. The President shall notify

the affected member of the action taken by the membership. If the action is dismissal the Secretary shall remove the member's name from the Club Roster.

ARTICLE XI - THE EXECUTIVE COMMITTEE

- 11.1 The Executive Committee shall consist of the elected Club Officers, the Club Librarian, the Club News Letter Editor, and the Club Safety Officer. All Club members in good standing may attend and participate in Executive Committee meetings.
- 11.2 The purpose of the Executive Committee shall be to recommend actions to the General Membership, plan activities, and other duties as directed by the President.
- 11.3 The President shall act as Chairman of the Executive Committee.
- 11.4 The Executive Committee shall meet on the first Monday of each month at a location and time determined by the Executive Committee.

Failure to comply with the rules and guidelines as set forth in this Sky Knights Member Handbook, or exhibiting unacceptable personal conduct will result in suspension of flying privileges and/or termination of club membership.

I have read, understand, and will comply with the above.

Signed _____

Witness _____

Date _____

(Turn in this signed page to the club secretary.)

